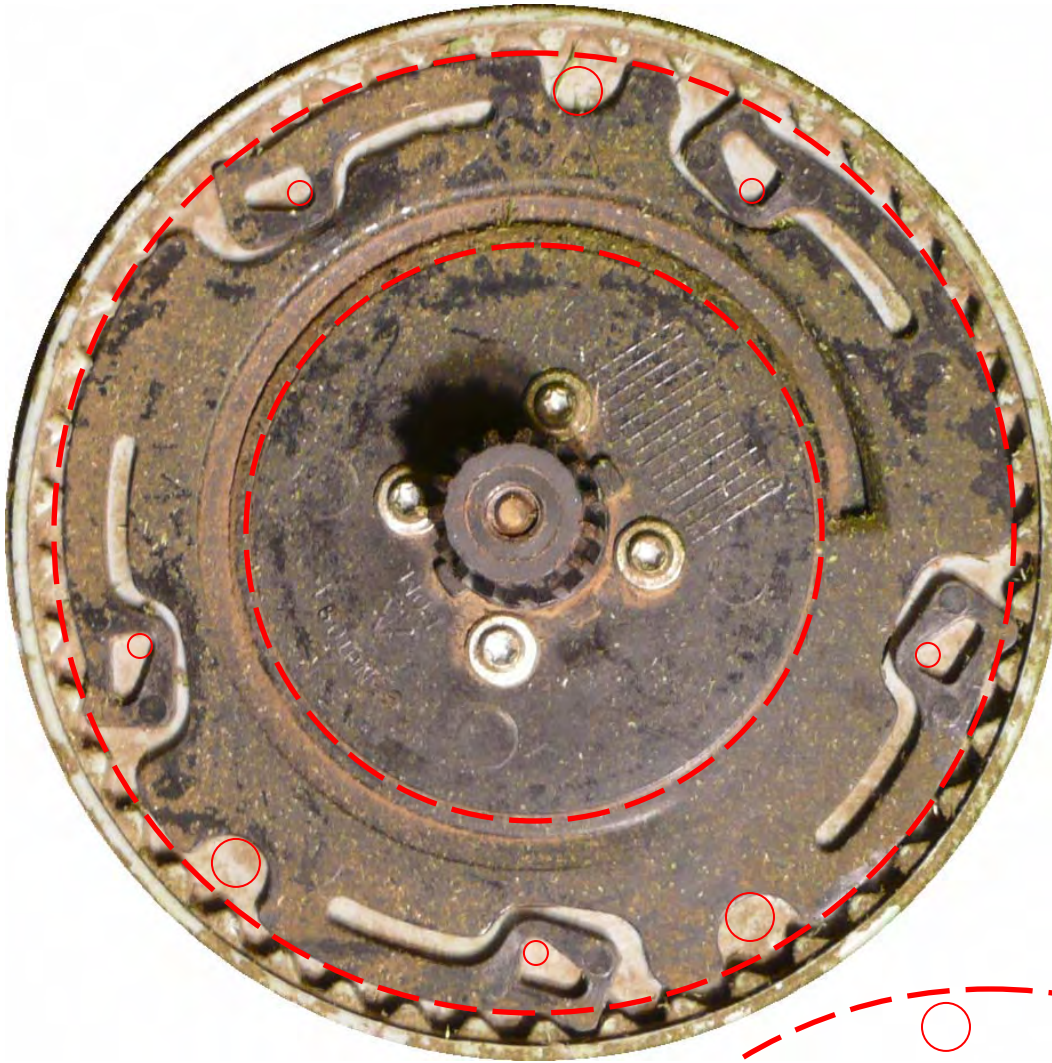
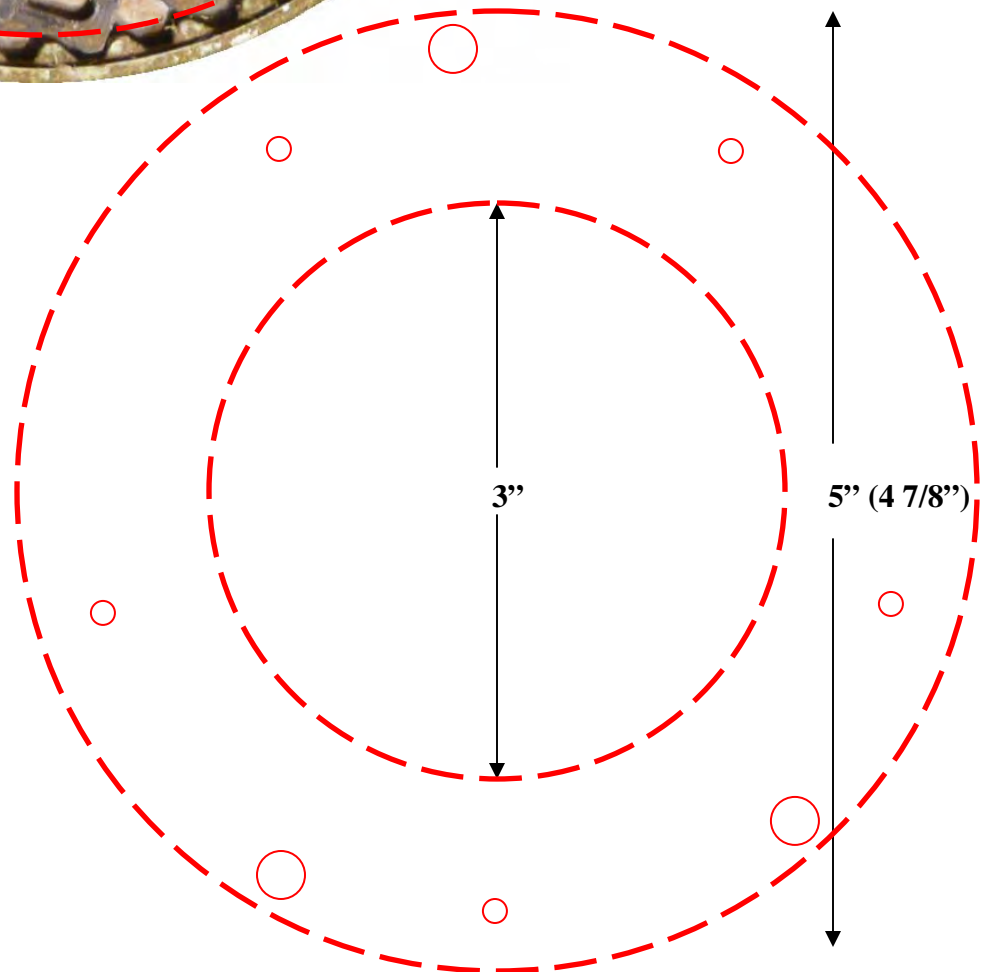


Motor Removal Tool Template



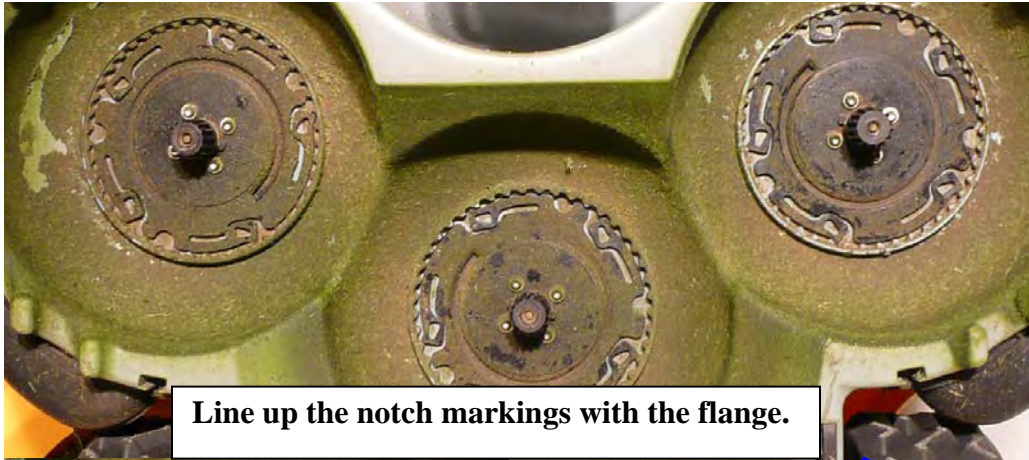
This is the motor flange with the markings for the tool. However the face of the tool would be the reverse of this as seen below...

Use a compass to draw a 3" inner circle and a 5" outer circle. Use a jigsaw to cut out the 3" inner circle first then cut inside the line of the 5" circle as the actual measurement is 4 7/8". Print and cut out the template to the right. Predrill the nail holes first (small red dots). The nails should stick out about 3/16" from the face.

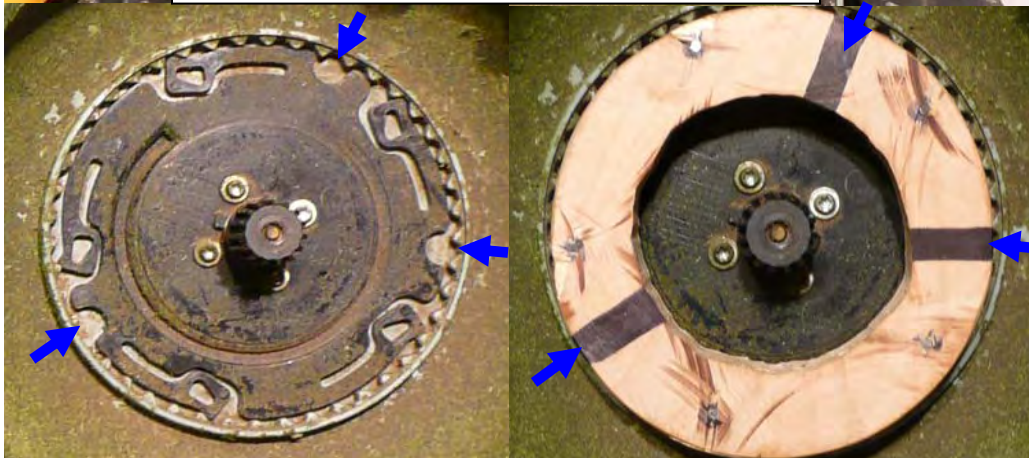


Scrap 3/4" plywood and 5 finish nails. Outside diameter 4 7/8" - Inside diameter 3". The tool only goes on one way... for some reason due to spacing it won't connect correctly unless you line up the notch markings even though the spacing looks equidistant.





Line up the notch markings with the flange.



Righty Tightly.
Lefty Loosy.

