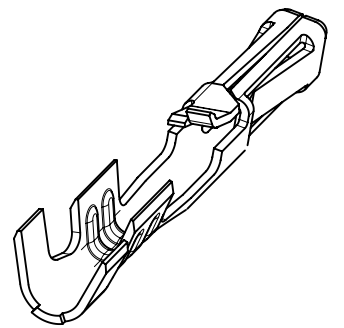


TERMINALS STAMPED WITH THE LETTER "A"
ACCEPT 24-30 AWG WIRE WITH A 1.52 MAX INSULATION DIA.



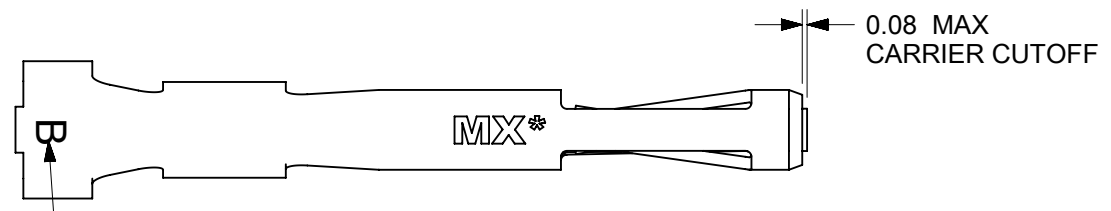
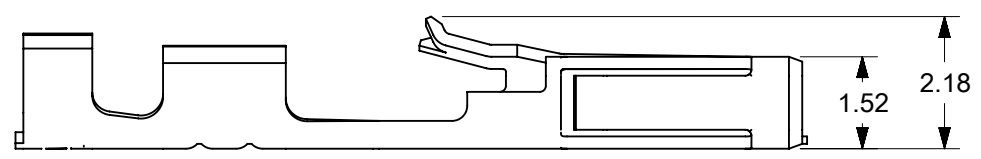
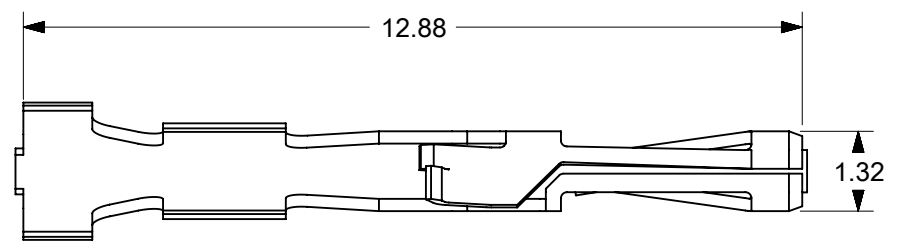
TERMINALS ON THIS SHEET ARE FOR USE
WITH 24-30 AWG WIRE.
SEE SHEETS 2 AND 3 FOR OTHER WIRE SIZES

NOTES:

- MATERIAL: PHOSPHOR BRONZE
- PLATING:
 - 124 = OVERALL BRIGHT TIN: 3.75 MICROMETERS MIN OVER NICKEL
 - 207 = SELECT HARD GOLD: 0.38 MICROMETERS MIN.
SELECT TIN: 2.0 MICROMETERS MIN BOTH OVER NICKEL
 - 206 = SELECT HARD GOLD: 0.75 MICROMETERS MIN.
SELECT TIN: 2.0 MICROMETERS MIN BOTH OVER NICKEL
 - 216 = SELECT HARD GOLD: 1.27 MICROMETERS MIN.
SELECT TIN: 2.54 MICROMETERS MIN BOTH OVER NICKEL
 - P124 = PREPLATED OVERALL BRIGHT TIN: 3.75 MICROMETERS MIN OVER NICKEL
(MAY HAVE UNPLATED EDGES)
- PRODUCT SPECIFICATION: TERMINALS CONFORM TO PS-70058 AND PS-70400 WHEN CRIMPED WITH MOLEX CRIMP TOOLS.
- COSMETIC SPECIFICATION: PS-45499-002 CLASS B
- TERMINAL FOR USE WITH HOUSING SERIES 70066 AND 70450
- WIRE SPECIFICATION: TERMINALS STAMPED WITH THE LETTER:
 - A = ACCEPTS 24-30 AWG STRANDED WIRE WITH A 1.52 MAX INSULATION DIA
 - B = ACCEPTS 32-36 AWG STRANDED WIRE WITH A 0.64 MAX INSULATION DIA.
 - C = ACCEPTS 22-24 AWG STRANDED WIRE WITH A 1.63 MAX INSULATION DIA

CURRENT PART NUMBER	REPLACEMENT PART NUMBER	PACKAGING	PLATING SEE NOTE 2	WIRE SIZE	MAX INSULATION DIA
16-02-0069	70058-1069	REEL	124	24-30 AWG	1.52 DIA MAX
16-02-0096	70058-1096	LOOSE	OVERALL TIN		
70058-4069	70058-0069	REEL	P124		
70058-4096	70058-0096	LOOSE	OVERALL TIN		
16-02-0082	70058-0082	REEL	207		
16-02-0097	70058-0097	LOOSE	0.38 GOLD		
16-02-0083	70058-0083	REEL	206		
16-02-0098	70058-0098	LOOSE	0.75 GOLD		
16-02-0139	70058-0139	REEL	216		
16-02-0140	70058-0140	LOOSE	1.27 GOLD		

THIS DRAWING CONTAINS INFORMATION THAT IS PROPRIETARY TO MOLEX ELECTRONIC TECHNOLOGIES, LLC AND SHOULD NOT BE USED WITHOUT WRITTEN PERMISSION																					
QUALITY SYMBOLS	NONE	EC NO: 119821	DRWN: KSAMIEC	CHKD: FSMITH	APPR: FSMITH	REV: A1	2017/07/25	2017/07/26	GENERAL TOLERANCES (UNLESS SPECIFIED)		DIMENSION UNITS		SCALE								
									ANGULAR TOL ± °		MM	8:1									
▽ = 0									4 PLACES	±	DRWN BY	DATE	KSAMIEC 2017/05/03		SL CRIMP TERMINAL (24-30 AWG WIRE)						
▽ = 0								3 PLACES	±	CHK'D BY	DATE	CHKD BY		PRODUCT CUSTOMER DRAWING							
▽ = 0								2 PLACES	± 0.25	APPR BY	DATE	FSMITH	2017/06/16					SERIES	MATERIAL NUMBER	CUSTOMER	70058 SEE CHART
▽ = 0								1 PLACE	± 0.15	DRAWING SIZE	THIRD ANGLE PROJECTION	B		DOCUMENT NUMBER	DOC TYPE	DOC PART	SHEET NUMBER	700580000-SD PSD 000 1 OF 4			
□ = 0								0 PLACES	± 0.0	DRAFT WHERE APPLICABLE MUST REMAIN WITHIN DIMENSIONS											
■ = 0																					
▽ = 0																					



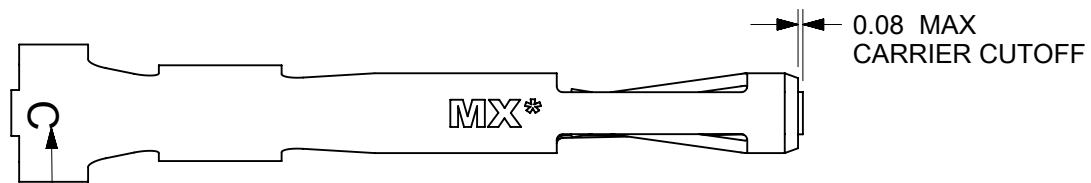
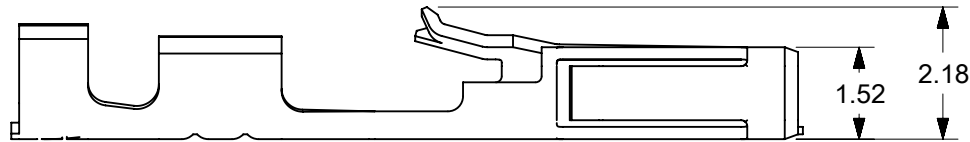
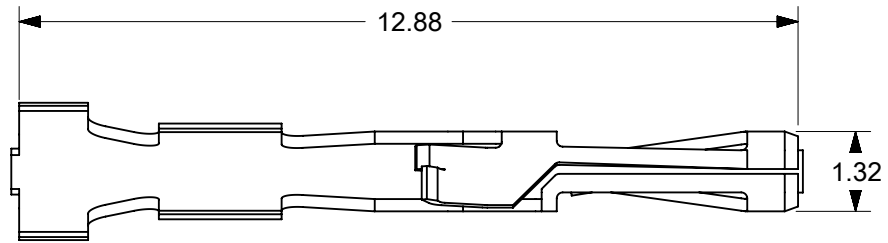
TERMINALS STAMPED WITH THE LETTER "B"
ACCEPT 32-36 AWG WIRE WITH A 0.64 MAX INSULATION DIA

- NOTES:
- MATERIAL: PHOSPHOR BRONZE
 - PLATING:
 - 124 = OVERALL BRIGHT TIN: 3.75 MICROMETERS MIN OVER NICKEL
 - 207 = SELECT HARD GOLD: 0.38 MICROMETERS MIN.
SELECT TIN: 2.0 MICROMETERS MIN BOTH OVER NICKEL
 - 206 = SELECT HARD GOLD: 0.75 MICROMETERS MIN.
SELECT TIN: 2.0 MICROMETERS MIN BOTH OVER NICKEL
 - 216 = SELECT HARD GOLD: 1.27 MICROMETERS MIN.
SELECT TIN: 2.54 MICROMETERS MIN BOTH OVER NICKEL
 - P124 = PREPLATED OVERALL BRIGHT TIN: 3.75 MICROMETERS MIN OVER NICKEL
(MAY HAVE UNPLATED EDGES)
 - PRODUCT SPECIFICATION: TERMINALS CONFORM TO PS-70058 AND PS-70400 WHEN CRIMPED WITH MOLEX CRIMP TOOLS.
 - COSMETIC SPECIFICATION: PS-45499-002 CLASS B
 - TERMINAL FOR USE WITH HOUSING SERIES 70066 AND 70450
 - WIRE SPECIFICATION: TERMINALS STAMPED WITH THE LETTER:
 - A = ACCEPTS 24-30 AWG STRANDED WIRE WITH A 1.52 MAX INSULATION DIA
 - B = ACCEPTS 32-36 AWG STRANDED WIRE WITH A 0.64 MAX INSULATION DIA.
 - C = ACCEPTS 22-24 AWG STRANDED WIRE WITH A 1.63 MAX INSULATION DIA

CURRENT PART NUMBER	REPLACEMENT PART NUMBER	PACKAGING	PLATING SEE NOTE 2	WIRE SIZE	MAX INSULATION DIA
16-02-0084	70058-1084	REEL	124	32 - 36 AWG	0.64 DIA MAX
16-02-0099	70058-1099	LOOSE	OVERALL TIN		
70058-4084	70058-0084	REEL	P124		
70058-4099	70058-0099	LOOSE	OVERALL TIN		
16-02-0074	70058-0074	REEL	207		
16-02-0100	70058-0100	LOOSE	0.38 GOLD		
16-02-0085	70058-0085	REEL	206		
16-02-0101	70058-0101	LOOSE	0.75 GOLD		
16-02-0143	70058-0143	REEL	216		
16-02-0144	70058-0144	LOOSE	1.27 GOLD		

TERMINALS ON THIS SHEET ARE FOR USE WITH 32-36 AWG WIRE.
SEE SHEETS 1 AND 3 FOR OTHER WIRE SIZES

QUALITY SYMBOLS ▽ = 0 ▽ = 0 ▽ = 0 ▼ = 0 ▽ = 0 ⊠ = 0 ■ = 0 ▽ = 0	THIS DRAWING CONTAINS INFORMATION THAT IS PROPRIETARY TO MOLEX ELECTRONIC TECHNOLOGIES, LLC AND SHOULD NOT BE USED WITHOUT WRITTEN PERMISSION									
	EC NO: 119821 DRWN: KSAMIEC CHKD: APPR: FSMITH	2017/07/25 2017/07/26	GENERAL TOLERANCES (UNLESS SPECIFIED)		DIMENSION UNITS	SCALE				
			ANGULAR TOL ± °		MM	8:1				
			4 PLACES ±		DRWN BY	DATE	SL CRIMP TERMINAL (32-36 AWG WIRE) PRODUCT CUSTOMER DRAWING			
3 PLACES ±		KSAMIEC	2017/05/03							
2 PLACES ± 0.25		CHKD BY	DATE							
1 PLACE ± 0.15		CHKD BY	DATE	APPR BY		DATE	SERIES: 70058 MATERIAL NUMBER: [] CUSTOMER: []			
0 PLACES ± 0.0		FSMITH	2017/06/16	FSMITH		2017/06/16				
DRAFT WHERE APPLICABLE MUST REMAIN WITHIN DIMENSIONS		DRAWING SIZE	THIRD ANGLE PROJECTION	B		DOCUMENT NUMBER: 700580000-SD DOC TYPE: PSD DOC PART: 000 SHEET NUMBER: 2 OF 4				



TERMINALS STAMPED WITH THE LETTER "C"
ACCEPT 22-24 AWG WIRE WITH A 1.63 MAX INSULATION DIA

NOTES:

- MATERIAL: PHOSPHOR BRONZE
- PLATING:
 - 124 = OVERALL BRIGHT TIN: 3.75 MICROMETERS MIN OVER NICKEL
 - 207 = SELECT HARD GOLD: 0.38 MICROMETERS MIN.
SELECT TIN: 2.0 MICROMETERS MIN BOTH OVER NICKEL
 - 206 = SELECT HARD GOLD: 0.75 MICROMETERS MIN.
SELECT TIN: 2.0 MICROMETERS MIN BOTH OVER NICKEL
 - 216 = SELECT HARD GOLD: 1.27 MICROMETERS MIN.
SELECT TIN: 2.54 MICROMETERS MIN BOTH OVER NICKEL
 - P124 = PREPLATED OVERALL BRIGHT TIN: 3.75 MICROMETERS MIN OVER NICKEL
(MAY HAVE UNPLATED EDGES)
- PRODUCT SPECIFICATION: TERMINALS CONFORM TO PS-70058 AND PS-70400 WHEN CRIMPED WITH MOLEX CRIMP TOOLS.
- COSMETIC SPECIFICATION: PS-45499-002 CLASS B
- TERMINAL FOR USE WITH HOUSING SERIES 70066 AND 70450
- WIRE SPECIFICATION: TERMINALS STAMPED WITH THE LETTER:
 - A = ACCEPTS 24-30 AWG STRANDED WIRE WITH A 1.52 MAX INSULATION DIA
 - B = ACCEPTS 32-36 AWG STRANDED WIRE WITH A 0.64 MAX INSULATION DIA.
 - C = ACCEPTS 22-24 AWG STRANDED WIRE WITH A 1.63 MAX INSULATION DIA

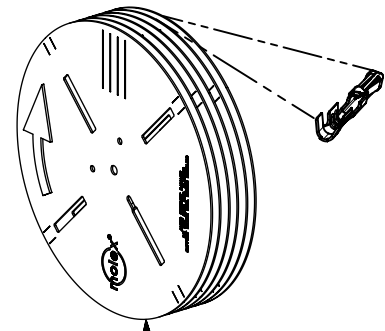
CURRENT PART NUMBER	REPLACEMENT PART NUMBER	PACKAGING	PLATING SEE NOTE 2	WIRE SIZE	MAX INSULATION DIA
16-02-0086	70058-1086	REEL	124 OVERALL TIN	22-24 AWG	1.63 DIA MAX
16-02-0102	70058-1102	LOOSE			
70058-4086	70058-0086	REEL	P124 OVERALL TIN		
70058-4102	70058-0102	LOOSE			
16-02-0087	70058-0087	REEL	207 0.38 GOLD		
16-02-0103	70058-0103	LOOSE			
16-02-0088	70058-0088	REEL	206 0.75 GOLD		
16-02-0104	70058-0104	LOOSE			
16-02-0131	70058-0131	REEL	216 1.27 GOLD		
16-02-0147	70058-0147	LOOSE			

TERMINALS ON THIS SHEET ARE FOR USE
WITH 22-24 AWG WIRE.
SEE SHEETS 1 AND 2 FOR OTHER WIRE SIZES

THIS DRAWING CONTAINS INFORMATION THAT IS PROPRIETARY TO MOLEX ELECTRONIC TECHNOLOGIES, LLC AND SHOULD NOT BE USED WITHOUT WRITTEN PERMISSION											
QUALITY SYMBOLS ▽ = 0 ▽ = 0 ▽ = 0 ▼ = 0 ▽ = 0 ⊠ = 0 ■ = 0 ▽ = 0	NONE EC NO: 119821 DRWN: KSAMIEC CHKD: APPR: FSMITH	2017/07/25 2017/07/26	GENERAL TOLERANCES (UNLESS SPECIFIED)		DIMENSION UNITS	SCALE	 SL CRIMP TERMINAL (22-24 AWG WIRE)				
			ANGULAR TOL ±		MM	8:1					
			4 PLACES ±	DRWN BY	DATE						
			3 PLACES ±	KSAMIEC	2017/05/03						
2 PLACES ± 0.25	CHK'D BY	DATE	PRODUCT CUSTOMER DRAWING								
1 PLACE ± 0.15	CHKD BY										
0 PLACES ± 0.0	APPR BY	DATE									
DRAFT WHERE APPLICABLE MUST REMAIN WITHIN DIMENSIONS	FSMITH	2017/06/16									
			DRAWING SIZE	THIRD ANGLE PROJECTION			SERIES	MATERIAL NUMBER	CUSTOMER		
			B				70058				
							DOCUMENT NUMBER	DOC TYPE	DOC PART	SHEET NUMBER	
							700580000-SD	PSD	000	3 OF 4	

REEL PACKED

LOOSE PACKED

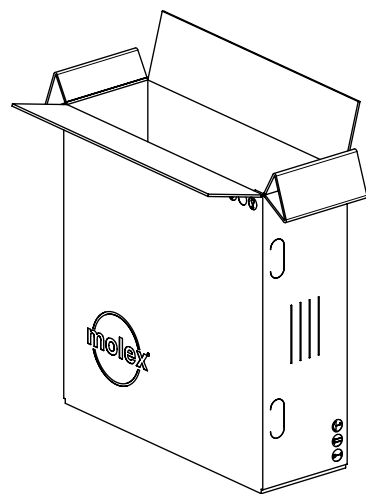
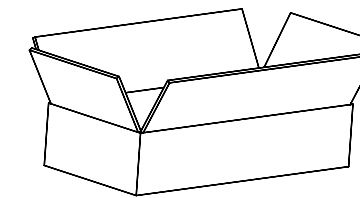


UNWINDING DIRECT
TO CRIMP MACHINE

PARTS PER REEL: 20,000
REELS PER BOX: 3
PARTS PER BOX: 60,000



PARTS PER BAG: 10,000
BAGS PER BOX: 2
PARTS PER BOX: 20,000



THIS DRAWING CONTAINS INFORMATION THAT IS PROPRIETARY TO MOLEX ELECTRONIC TECHNOLOGIES, LLC AND SHOULD NOT BE USED WITHOUT WRITTEN PERMISSION																
QUALITY SYMBOLS 	NONE		GENERAL TOLERANCES (UNLESS SPECIFIED)		DIMENSION UNITS		SCALE									
	2017/07/25		ANGULAR TOL ± °		MM		1:15									
	2017/07/26		4 PLACES ±		DRWN BY		DATE		SL CRIMP TERMINAL							
	EC NO: 119821		3 PLACES ±		KSAMIEC		2017/05/03									
	DRWN: KSAMIEC		2 PLACES ± 0.25		CHK'D BY		DATE		PRODUCT CUSTOMER DRAWING							
	CHK'D:		1 PLACE ± 0.15		CHKD BY		DATE									
	APPR: FSMITH		0 PLACES ± 0.0		APPR BY		DATE		SERIES		MATERIAL NUMBER		CUSTOMER			
	REV		DRAFT WHERE APPLICABLE MUST REMAIN WITHIN DIMENSIONS		FSMITH		2017/06/16		70058							
	A1		B		DRAWING SIZE		THIRD ANGLE PROJECTION		DOCUMENT NUMBER		DOC TYPE		DOC PART		SHEET NUMBER	
					B				700580000-SD		PSD		000		4 OF 4	